

herkulesTM

G550

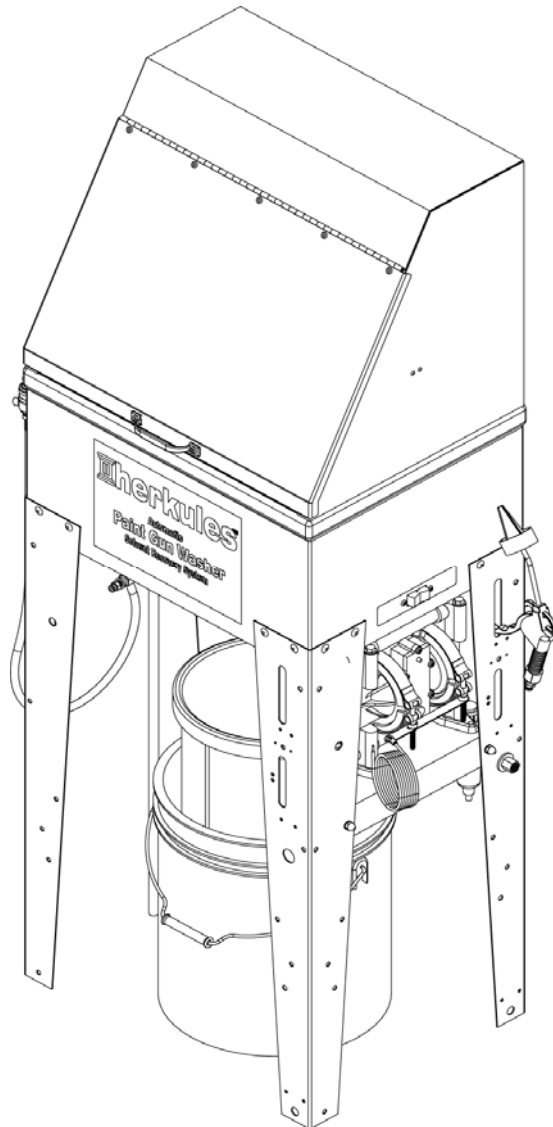
Part# 1003108-11
9/18/2013
Starts with S/N 113397

OWNER'S MANUAL



This manual contains important information concerning the installation and operation of the gun washers listed above. **Read manual thoroughly and keep for future reference**

INSTRUCTIONS



Herkules Equipment Corporation
248-960-7100

2760 Ridgeway Court
800-444-4351

Walled Lake, MI 48390-1662 USA
Fax 248 960-7109

Patents USA 7070167 4793369, 4960142, 5174317, 5193561, 5485860 Canada 1299468 & Patents Pending
website: www.herkules.us Made in the USA e-mail: info@herkules.us

Table of Contents

Warnings	3-4
Model Information	5
Installation	5
Operation	6-7
Preventive Maintenance	7
Troubleshooting	8
Drawings with part lists:	9-12

Warning Symbol



This symbol alerts you to the possibility of serious injury or death if you do not follow the instructions.

Caution Symbol



This symbol alerts you to the possibility of damage to or destruction of equipment if you do not follow the instructions.

Serial Number _____

Model Number _____

Purchase Date _____

Distributor _____

PATENT NUMBERS

This product has patent protection under one or more of the following patent numbers:

7070167, 5485860, 5193561, 5174317
4960142, 4793369, 1299468
and Patents Pending

website: www.herkules.us

1002742



WARNING



EQUIPMENT MISUSE HAZARD

Equipment misuse can cause the equipment to rupture, malfunction, or start unexpectedly and result in serious injury.

- This equipment is for professional use only.
- Read all instruction manuals, tags, and labels before operating the equipment.
- Use the equipment only for its intended use.
- Do not alter or modify this equipment.
- Do not exceed the maximum working pressure of the lowest rated system component.
- Do not operate the gun washer at a pressure above the maximum working pressure rating of the gun(s) being cleaned.
- Route the hoses away from traffic areas, sharp edges, moving parts, and hot surfaces.
- Do not use the hoses to pull the equipment.
- Do not move pressurized equipment.
- Comply with all applicable local, state and national fire, electrical and other safety regulation.



PRESSURIZED EQUIPMENT HAZARD

Spray from hose leaks, ruptured components, or from operating the gun washer with an open lid can splash fluid in the eyes or on the skin and cause serious injury.

- Do not stop or deflect fluid leaks with your hand, body, glove, or rag.
- Tighten all fluid connections before operating the equipment.
- Replace worn, damaged, or loose parts immediately.



WARNING



FIRE AND EXPLOSION HAZARD



Improper grounding, poor air ventilation, open flames, or sparks can cause a hazardous condition and result in fire or explosion and serious injury.

- Ground the equipment. See Installation for grounding procedure.
- Provide fresh air ventilation to avoid the build up of fumes.
- Extinguish all open flames or pilot lights in the gun washer area.
- Disconnect all electrical equipment in the gun washer area.
- Keep the gun washer area free of debris, including cleaning solutions, rags, and gasoline.
- Do not turn on any light switch in the gun washer area while operating or if fumes are present.
- Do not smoke in the gun washer area.
- Do not operate a gasoline engine in the gun washer area.
- If there is any static sparking while using the equipment, **stop operation immediately**. Identify and correct the problem.

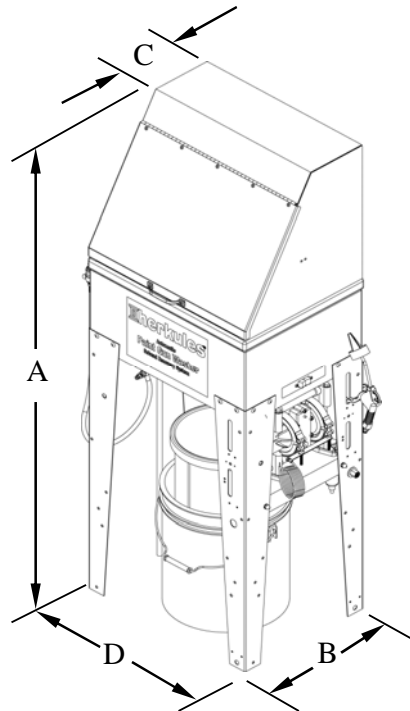


TOXIC FLUID HAZARD

Hazardous fluids or toxic fumes can cause serious injury or death if splashed in eyes or on the skin, swallowed, or inhaled.

- Know the specific hazards of the fluid you are using. Read the fluid manufacturer's warnings.
- Store hazardous fluid in an approved container. Dispose of hazardous fluid according to all local, state and national guidelines.
- Wear the appropriate protective clothing, gloves, eyewear and respirator.
- Pipe and dispose of the exhaust air safely. If diaphragm fails, the fluid may be exhausted along with the air.

Model Information



NOTE: Dimensions listed are overall measurements.

Model	Description	Weight lbs/(kg)	Dimensions in./(mm)			
			A	B	C	D
G550	Manual cleaning waterborne Gun Washer includes pressure cleaning nozzle, clean rinse nozzle, flow thru brush and agitator / accelerator.	69 (31.3)	56 (1422)	15.5 (394)	6.5 (165)	20.38 (518)

Installation

Installing the Gun Washer

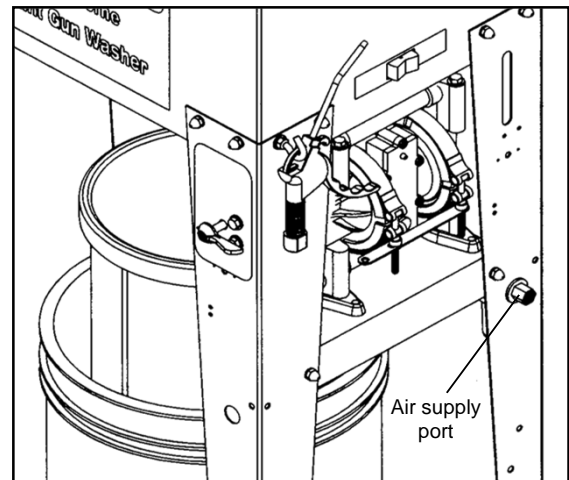
- 1) Place gun washer on a level surface in a properly ventilated paint mixing room or paint booth.

Grounding the Gun Washer

- 1) Connect the ground wire on the gun washer's pump to a true earth ground.
- 2) Ground all equipment used or located in the gun washer area.

Connecting the Air Line

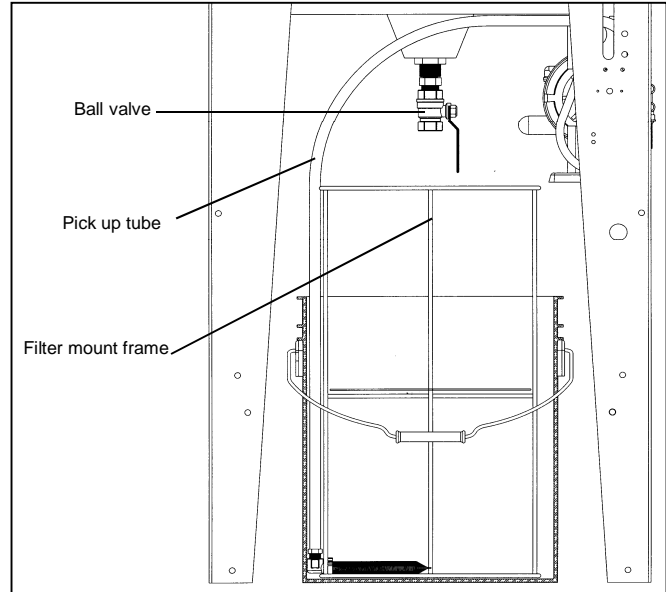
- 1) Install a 1/4 in. npt male coupler, that is compatible with the quick disconnect of your air supply line, into the air supply port of the filter/regulator located on the back right leg.
- 2) Connect air line with at least 75 psi to the coupler. Filter/regulator is preset. Do not adjust.



Operation

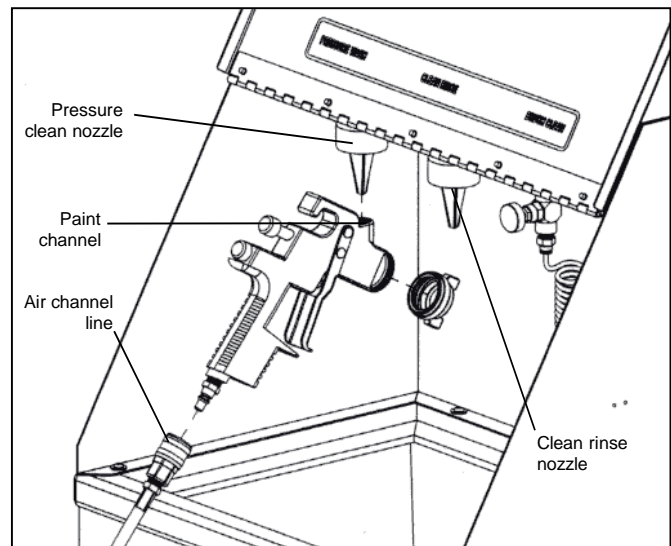
Connecting the water to the washer

- 1) Insert the filter mount frame into the bucket.
- 2) Fill with water until the water level reaches the bottom of the filter support cross arms.
- 3) Connect the large filter bag to the filter mount frame so that the bottom of the filter is resting on the filter support.
- 4) Insert the small filter bag into the large bag and connect to the filter mount frame.
- 5) Place the bucket under the Gun Washer and insert the pick up tube between the bucket wall and the filter.
- 6) Close ball valve.



Preparing the Equipment to be washed

- 1) Remove paint cup or paint line and the air line from the paint gun.
- 2) Drain excess paint from cup and gun into a separate container.
- 3) Remove all gauges and regulators from painting equipment.
- 4) Remove the air cap/fluid tip from the paint gun.
- 5) Connect the air channel line to the spray gun using the supplied quick disconnects or replace the supplied quick disconnects with ones compatible with the shops equipment.



CAUTION

All pressure gauges must be removed before placing the equipment in the gun washer to avoid damaging the gauges.

Cleaning Equipment

- 1) To activate manual clean brush, turn handle on valve until water starts to flow. Flow can be adjusted using the handle on the manual brush valve.
- 2) Position the spray gun so the pressure clean nozzle is inserted into the paint channel of the spray gun. Lift up with the gun while squeezing the trigger to activate the push valve to send a pressurized flow of water through the gun's paint channel.

Note: Position the spray gun so that the flow of water exiting the paint gun is contained within the Gun Washer tub



Operational Note:

- 1) The Gunwasher is set up to deliver water on demand for cleaning. This means that the right side pump **MUST** have a full draw bucket available when plugging the Gunwasher into plant air. If a bucket is not available, the pump will continue to cycle until a draw bucket is placed to supply water pressure to the Pressure Wash nozzle and the Manual Brush nozzle. Once water pressure is delivered to these ports, the pump will stop cycling. The pump may also cycle periodically to maintain water pressure to the Pressure Wash nozzle and the Manual Brush nozzle.

Operation

Clean rinse

- 1) Fill an additional bucket (not supplied) with distilled water.
- 2) Insert the clean rinse pick up tube located on the left side of the Gun Washer in the bucket.
- 3) Set the rinse / agitator switch on the right side of the Gun Washer to rinse.
- 4) Position the spray gun so the clean rinse nozzle is inserted into the paint channel of the spray gun.
- 5) Squeeze the trigger of the spray gun while lifting up with the gun to send a pressurized flow of clean water through the gun's paint channel.
- 6) Return the rinse / agitator switch to the neutral position when finished.
- 7) Use the air gun to dry off any wet components.

Note: Reuse the cleaning solution / water mixture until it becomes tacky to the touch. Dispose of all waste materials according to local, state, and federal regulations.

- 7) Empty the paint waste out of the inner filter. Place inner filter back on the filter holder for up to 10 uses.
Note: place solid waste onto a piece of cardboard to finish drying. This will speed the process as the cardboard will absorb the moisture from the paint debris.
- 8) Close the ball valve. Replace filter bags (P/N 1003348 & P/N 1003351) as needed.
- 9) Dispose of all waste materials according to all local, state, and federal regulations.
- 10) Wipe inner tank after each use.

Filtering Dirty water (optional)

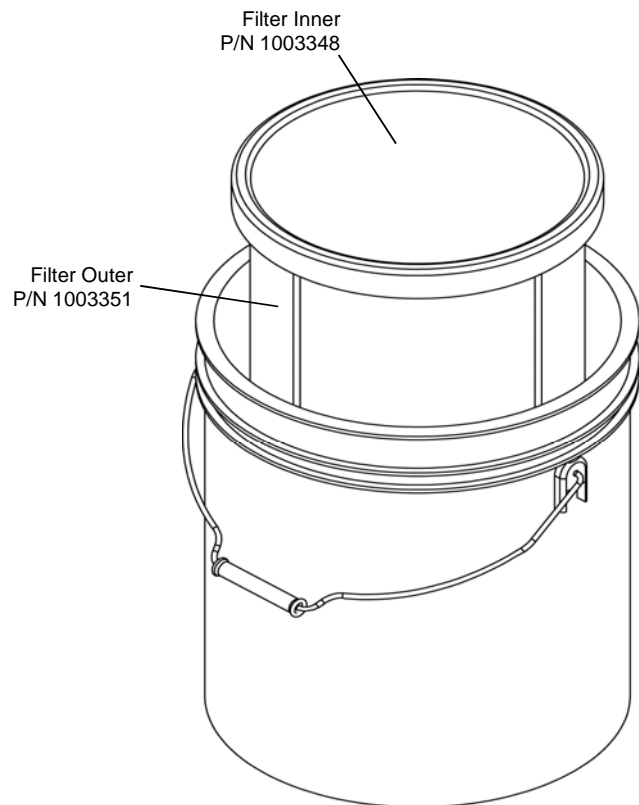
- 1) Remove the cleaning platform from inside of the tank.
- 2) Pour the dirty paint mixture to be recycled into the tank. Do **not** exceed the 5 gallon capacity of the tank.
- 3) Add flocculant / coagulant to the dirty paint mixture. (Herkules CoAgent P/N CA01 recommended).

Note: Contact local distributor to purchase flocculant/coagulant. Amount of flocculant/coagulant required will vary depending on the brand of flocculant being used.

- 4) If using Herkules CoAgent P/N CA01, add 1 tablespoon per 5 gallons of dirty paint mixture.
- 5) Set the switch on the side of the Gunwasher to Agitator. Stir mixture for 30 seconds during agitation. Allow the dirty paint mixture / flocculant mix to agitate for 30 to 120 seconds (dependent upon quality of flocculant). Let the mixture sit for 30 seconds. Return the agitator switch to the neutral position.

Note: Repeat process if adequate separation does not occur (dependent upon quality of flocculant).

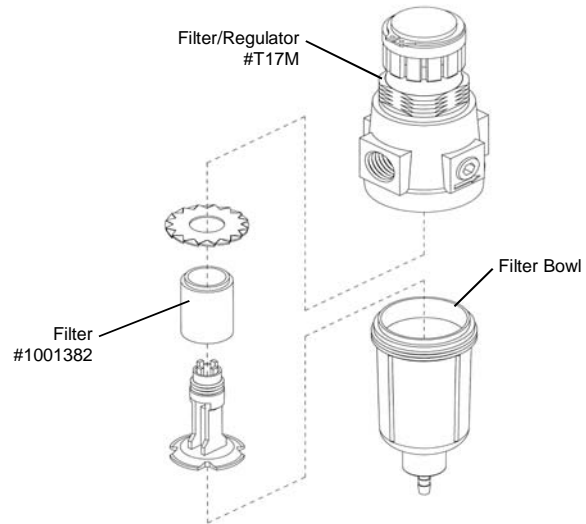
- 6) Open the ball valve to allow the mixture to drain through the filter bags. The filter bags capture the paint debris, and the bucket captures the filtered cleaning solution / water mixture that can be reused for cleaning.



Preventive Maintenance

- 1) Drain excess paint from cup or pot before placing in gun washer.
- 2) Remove the filter bowl and check the filter inside the regulator for excess buildup approx. every 6 months.
- 3) Change water completely when objects being cleaned become tacky to the touch.
- 4) Clean inside of tub.

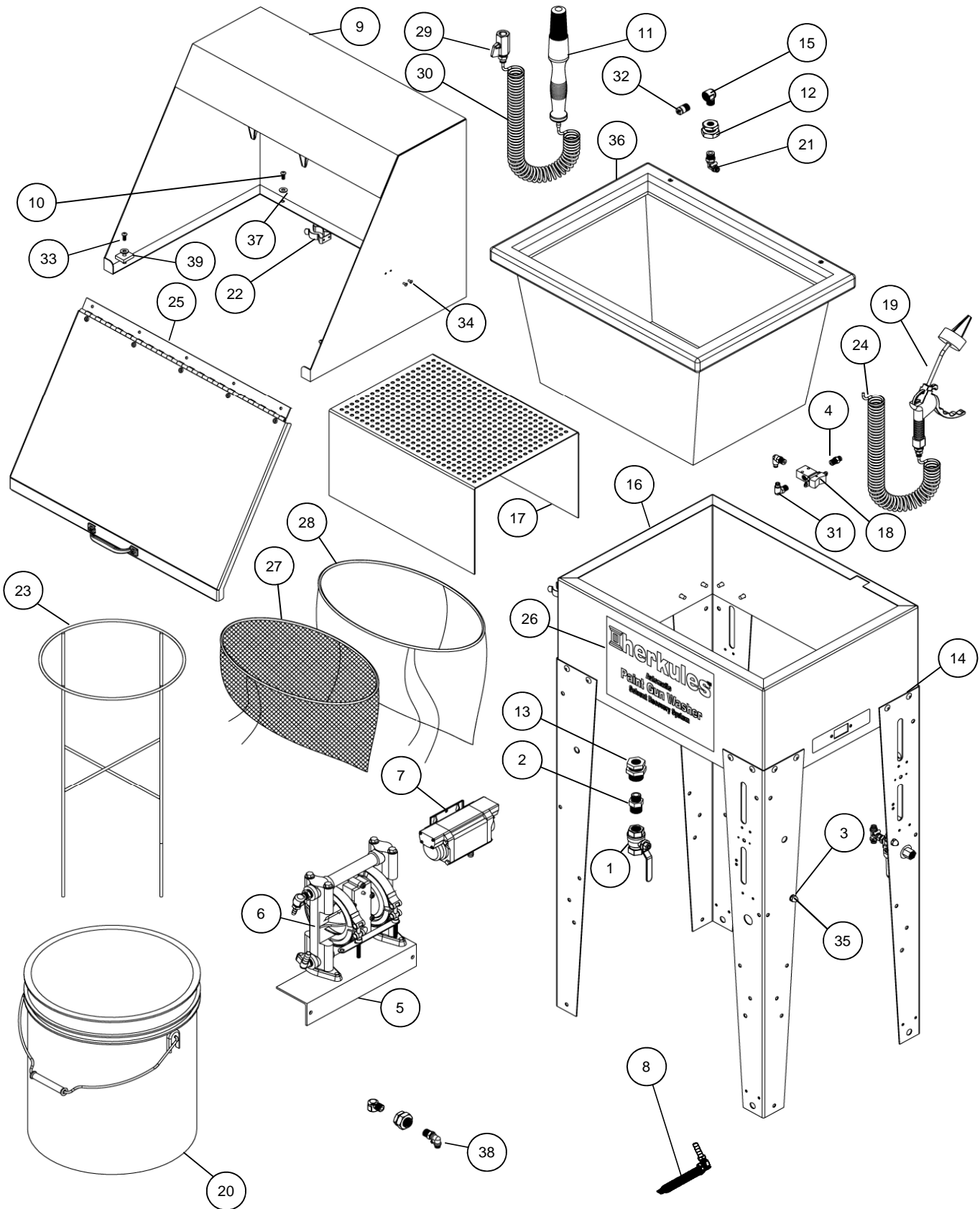
CAUTION
<p>Do not change the setting of the filter/regulator. This could damage the filter/regulator or pump.</p>



Troubleshooting

Problem	Possible Solution
Pump turns on but wash water does not flow.	<ol style="list-style-type: none"> 1 Make sure wash bucket is not empty. 2 Make sure the filter at the end of the pick up tube is completely submerged in water. 3 Check all fluid connections to ensure that there are no leaks.
Pump does not turn on.	<ol style="list-style-type: none"> 1 Make sure intake filter is not clogged (Clean or replace). 2 Make sure the air line is properly connected with at least 75 psi. Air pressure is regulated at 75 psi. 3 Check all air connections to ensure that there are no leaks.
No flow through the manual brush.	<ol style="list-style-type: none"> 1 Make sure wash bucket is not empty. 2 Make sure the filter at the end of the pick up tube is completely submerged in water. 3 Check all fluid connections to ensure that there are no leaks. 4 Make sure valve handle is not closed all the way.

G550 Parts Layout



G550 Parts Layout

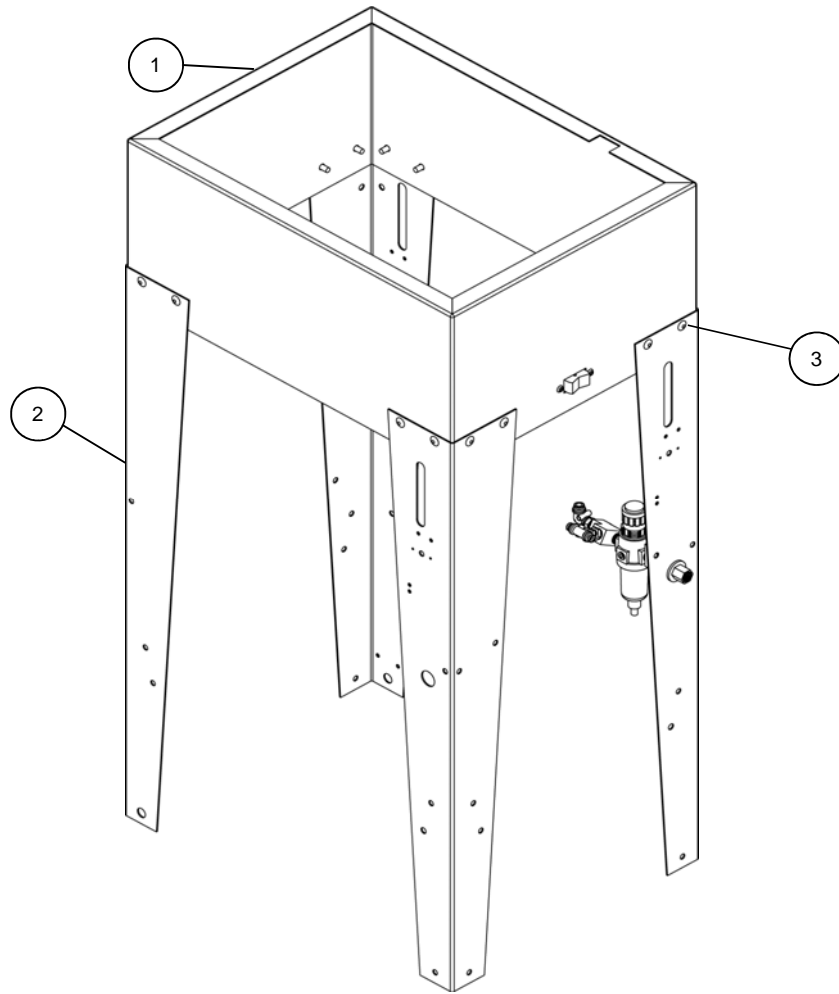
	Part #	Description	Quantity	
1	6	Ball Valve	1	EA
2	62	Reducer 1/2 NPT X 3/8 NPT	1	EA
3	85	Lock Washer 1/4	4	EA
4	T4	Hose Fitting 5/32 X 1/8 NPT	1	EA
5	11958	Pump Bracket	1	EA
6	13124	Pump Assembly	1	EA
7	318	Rinse Pump	1	EA
8	13053	Filter Assembly	1	EA
9	13107	Shroud assembly	1	EA
10	1003889	Screw HWH 10-24 x 1/2 SS	2	EA
11	1000563	Brush	1	EA
12	1002643	Bulkhead 3/4 - Brass	2	EA
13	1002644	Bulkhead 1 - Brass	1	EA
14	1003597	Rivet 1/4 x 1/2 Aluminum Blind	16	EA
15	1002779	Elbow 1/4 NPT	1	EA
16	14566	Stand Assy 20 x 15 x 39 W/ 2 Pedals	1	EA
17	13901	Cleaning Platform	1	EA
18	1002912	Toggle valve	1	EA
19	13800	Air Gun	1	EA
20	1002914	Bucket	1	EA
21	T25	Hose Fitting 90° 5/32 x 1/4 NPT	1	EA
22	1002953	Spring Clip 7/8 X 1-1/8 SS	1	EA
23	1002967	Filter mount frame	1	EA
24	1002968	Tube Coiled 5/32	1	EA
25	1003272	Lid	1	EA
26	1003048	Front Decal	1	EA
27	1003348	Filter - inner	1	EA
28	1003351	Filter - outer	1	EA
29	1004559	Ball Valve Mini 1/4 NPT x 1/4 NPT	1	EA
30	1003459	Tube Coiled 1/4	1	EA
31	002-129	Hose Fitting 90° 5/32 x 1/8 NPT	2	EA
32	002-134	Nozzle 1/4 NPT Brass	1	EA
33	002-175S	Screw 10-24 x 3/4 SS	2	EA
34	002-192	Rivet 1/8 x 1/4 Aluminum	2	EA
35	008-244	Acorn nut 1/4-20	2	EA
36	1-MINI-BLUE	Tub	1	EA
37	1002656	Washer Nylon #10	4	EA
38	002-118	Hose Fitting PTC 90° SVL 1/4 x 1/4 NPT	1	EA
39	13899	Deflector Block	2	EA

See pg. 12

See pg. 11

Note: For parts shown but not identified refer to assembly layouts on pages 11-13

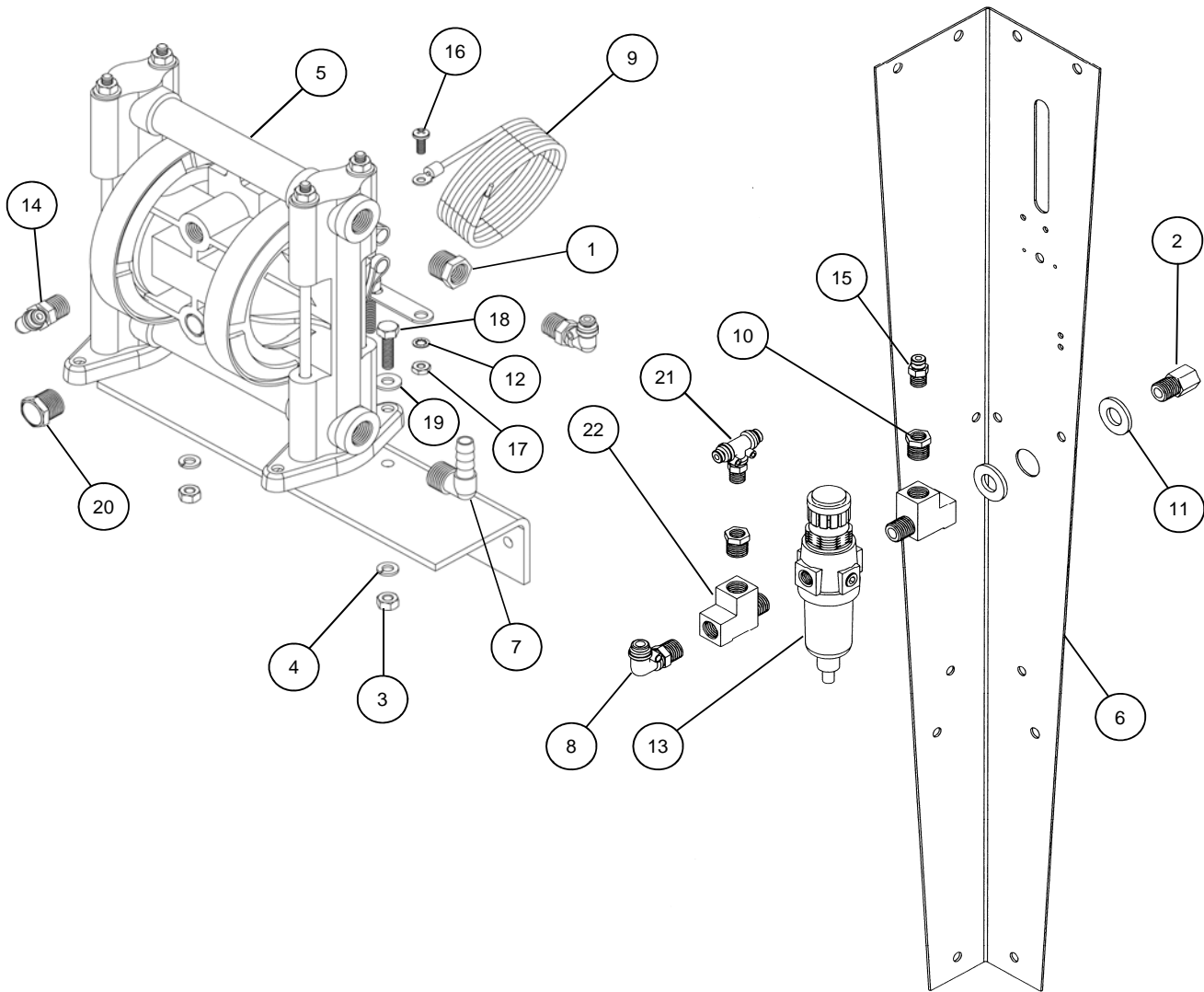
G550 Stand



	Part #	Description	Quantity	
1	13050	Stand Frame Assembly For G510/G550	1	EA
2	1002378	Leg For Gun Washers	4	EA
3	1003597	Rivet 1/4 x 1/2 Aluminum Blind	16	EA

See Page 12-13 for Regulator Assembly

G550 Pump and Legs Layout



G550 Pump and Leg Layout

	Part #	Description	Quantity
1	66	Reducer 3/8 NPT X 1/4 NPT Brass	1 EA
2	67	Adaptor 1/4 NPT Brass	1 EA
3	84	Hex Nut 1/4-20 Zinc	2 EA
4	85	Lock Washer 1/4 Zinc	2 EA
5	338	Pump	1 EA
6	13042	Rear Leg	1 EA
7	1002650	Hose Barb 90° 3/8 X 3/8 NPT Brass	1 EA
8	002-118	Hose Fitting 90° 1/4T x 1/4 NPT	1 EA
9	002-120A-72	Ground Wire	1 EA
10	005-134	Reducer 1/4 NPTx1/8 NPT Brass	2 EA
11	85I	Washer Flat 1/2 USS Z	2 EA
12	24E	Washer Lock Internal Tooth #10 Z	1 EA
13	T17M	Filter / Regulator	1 EA
14	T25	Hose Fitting 90° 5/32Tx1/4 NPT	2 EA
15	T4	Hose Fitting 5/32 X 1/8 NPT	1 EA
16	005-131	Screw 10-24 x 1/2 - Stainless	1 EA
17	005-132	Nut Hex 10-24 - Stainless	1 EA
18	83	Bolt Hex 1/4-20 x 1 - Zinc	2 EA
19	001-705	Washer Flat 1/4 USS - Zinc	2 EA
20	1001441	Muffler	1 EA
21	1000818	Tee Street PTC 5/32 x 1/8 NPT	1 EA
22	C12CX	Tee Street 1/4 NPT Brass	2 EA

Note: Parts are shown for reference purposes only and are not necessarily part of a Herkules assembly.