

Manufacturing Systems and Equipment for the Automotive and Industrial Markets



CRUSHING



CURING



HANDLING



LIFTING



WASHING



VACUUMING

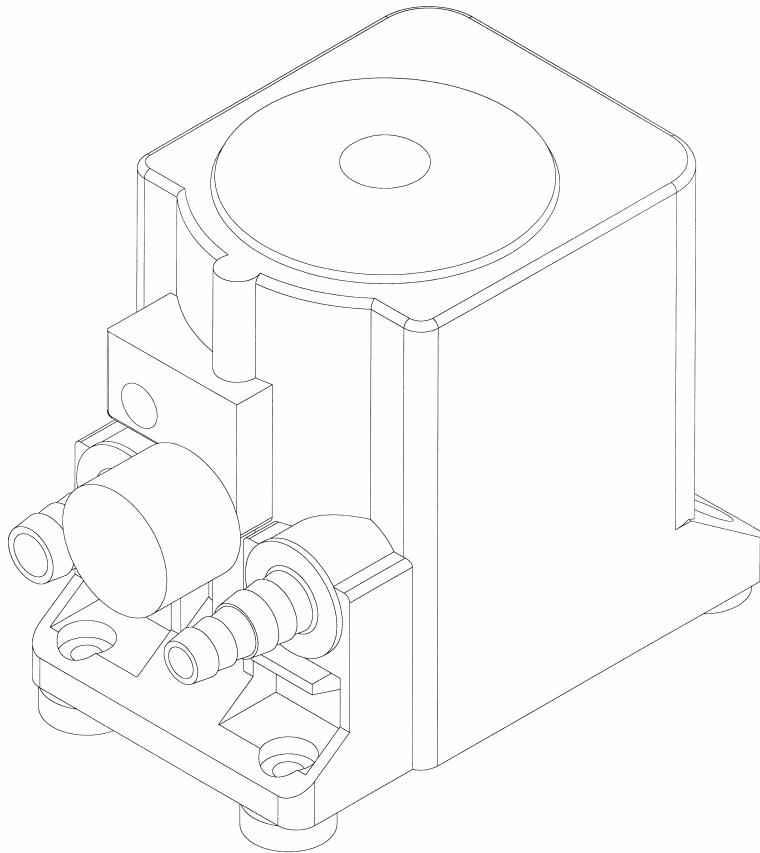
Installation Instructions

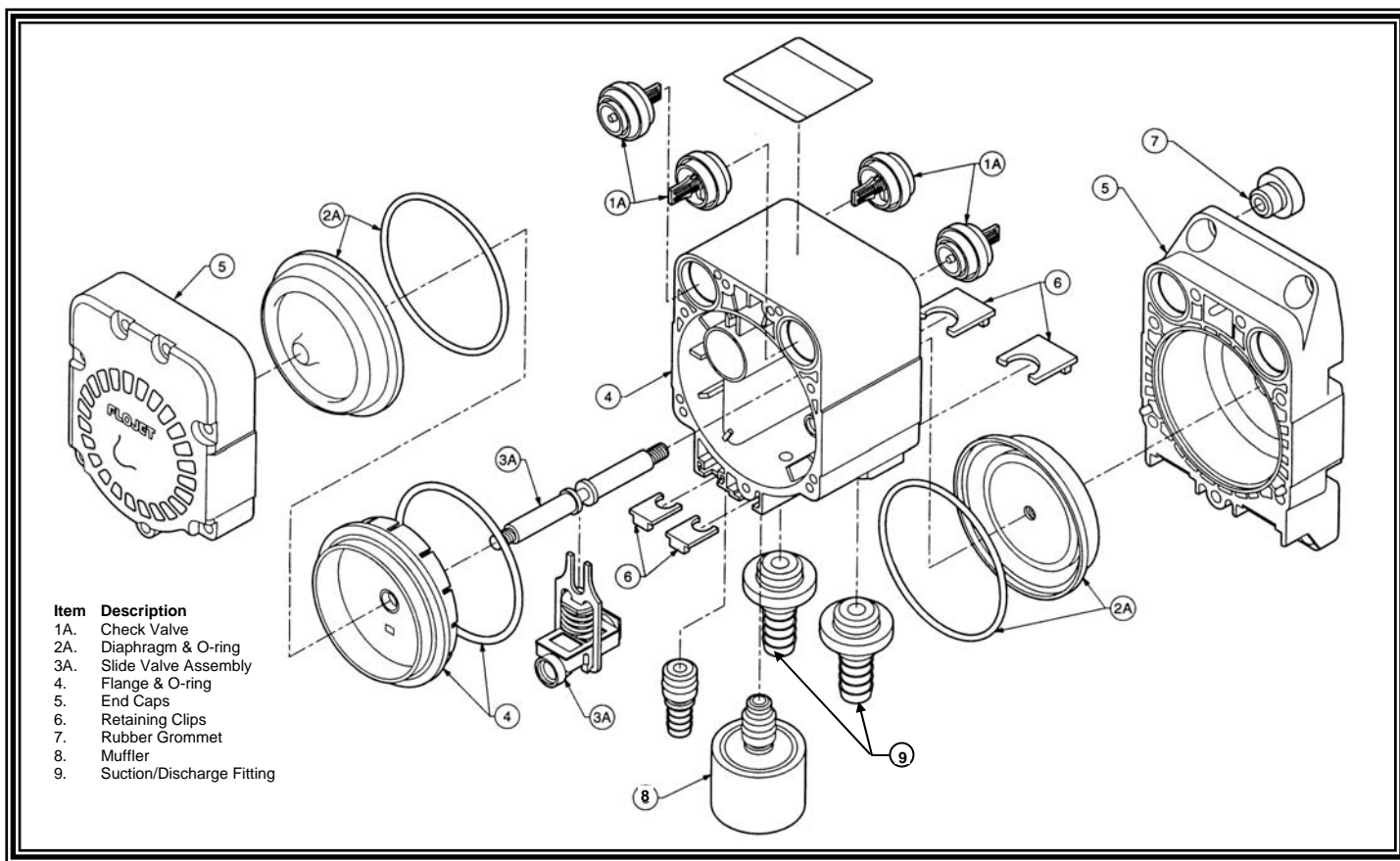


INSTRUCTIONS

This manual contains important information concerning the installation and operation of the equipment listed below. **Read manual thoroughly and keep for future reference.**

10792 Rebuild kit





Disassemble Procedure

First remove all air in lines and suction/discharge fittings from the pump. This is accomplished by using a flat bladed screwdriver to slide the retaining clip away from the air in and suction/discharge fittings and pulling the fittings away from the pump body. Now remove the muffler by sliding the retaining clip away from the muffler base and pulling the muffler out of the pump body.

Using a Phillips screwdriver remove the seven screws from the front-end cap followed by the seven screws from the rear end cap. With the front end facing up and the rear end facing down on the workbench, position a flat bladed screwdriver into the slot located above the muffler port and just below the pad marked Air/CO₂ and lift off the front end cap. The rear end cap can be removed by placing the flat bladed screwdriver under the fully opened port retaining clip and lifting off.

Note the position of the suction and discharge valves before removing them from the pump body. The first diaphragm is removed from the pump shaft by unscrewing in a counter clockwise direction. The second diaphragm is removed by the flat tip of a screwdriver into the exposed slot at the end of the shaft and unscrewing the diaphragm from the shaft. To remove the flange housing, place the tip of a flat bladed screwdriver into the air bleed hole on the lower side of the flange housing and lift up the lower end separating the flange housing from the pump body. The slide valve assembly and the pump shaft can be removed by simply pulling them from the pump body. The pump shaft then can be removed from the slide valve yoke assembly.

Reassemble Procedure

Assemble the slide valve and the pump shaft with the yoke placed between the two bumpers on the pump shaft. Install the slide valve/pump shaft assembly into the pump body making sure the o-rings in the slide valve are in place. To install the flange housing, pre-lube the o-ring with Parker Super "O" Lube and install on flange housing and place housing over the pump body aligning the flange housing with the pump body ribs pressing it into place.

Install the first diaphragm and o-ring onto the pump shaft threading it onto the shaft using a flat blade screwdriver to hold the pump shaft until the diaphragm is tight. Install the second diaphragm and o-ring onto the pump shaft turning clockwise until tight.

Install the suction valves with springs facing into the pump body and the discharge valves with the springs facing out. See arrows on pump rear end cap below suction and discharge ports.

Install the port retaining clips (large) into the pump end cap (mounting base) and install the seven Phillips screws into the pump body and cross tighten until snug and the cross torque to 22-24 inch pounds. Install port retaining clips (small) into the pump body, tabs facing out, position the front end cap and install the seven Phillips screws into the pump body and cross tighten until snug and the cross torque to 22-24 inch pounds.

Install the muffler in the center port by pushing it in and sliding the retaining clip into place. Install the suction and discharge and the air in port fitting and slide the retaining clips into place. Check for leaks.